

Brakes Schematics

Section 05-02-02 Gen2



LDG2-S-V-BR-0001

Table of Contents

Preface	5
Copyright	5
Brake Controls Diagram	7

This Page Intentionally Left Blank

Preface

This Manual is provided as a guide to personnel involved with the operation, maintenance and repair of Komatsu Mining Corp. equipment. We recommend that such personnel review and become familiar with the general procedures and information contained within this manual. In addition, we recommend that this manual be kept readily available for reference when repairs or maintenance are necessary.

Read and become familiar with this Manual and any other general safety practices before attempting any procedures.

Due to the complexities of mining equipment and the environment in which it operates, situations may arise which are not directly discussed in detail in this Manual. When such a situation arises, past experience, availability of equipment and common sense play a large part in what steps are to be taken. In addition, a Komatsu Mining Corp. service center representative is available to answer your questions and assist you upon request.

Komatsu Mining Corp. reserves the right to continually improve its products and associated documentation. Therefore, physical alterations to Komatsu equipment may not be identified in this Manual. Revisions may be frequently made to this Manual in an effort to ensure that information contained within is current as alterations occur to the equipment. If you find an error or have other feedback regarding this Manual, please contact Product Training and Publications at *Pro.Train.Pub@mining.komatsu*.

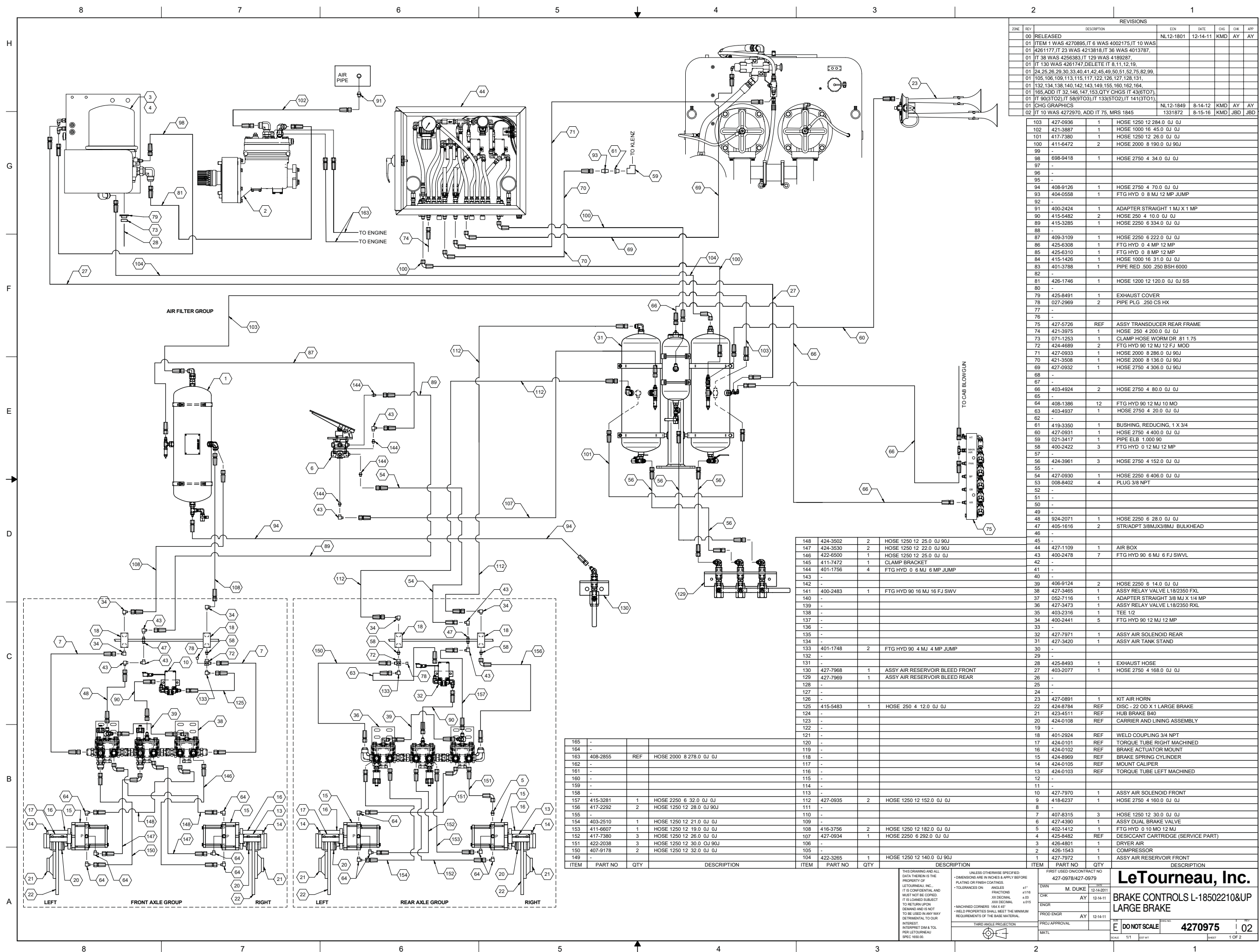
Copyright

© 2018 Komatsu Mining Corp. All rights reserved. This Manual is protected by United States copyright law and international treaties, and may not be reproduced, distributed, transmitted, displayed, published or broadcast without the prior written permission of Komatsu Mining Corp. or one of its affiliates. You may not alter or remove any trademark, copyright or other notice from copies of this Manual. All rights in translations of this Manual remain exclusively with Komatsu Mining Corp. or one of its affiliates.

This Page Intentionally Left Blank

Brake Controls Diagram

This Page Intentionally Left Blank



REVISIONS						
DATE	REV	DESCRIPTION	EN	DATE	CHK	APP
	00	RELEASED	NL12-1801	12-14-11	KMD	AY
	01	ITEM 1 WAS 4270895, IT 6 WAS 4002175, IT 10 WAS				
	01	4261177, IT 23 WAS 4213818, IT 36 WAS 4013787,				
	01	IT 38 WAS 4256383, IT 129 WAS 4189287,				
	01	IT 130 WAS 4261747, DELETE IT 8, 11, 12, 19,				
	01	24, 25, 26, 29, 30, 33, 40, 41, 42, 45, 49, 50, 51, 52, 75, 82, 99,				
	01	105, 106, 109, 113, 115, 117, 122, 126, 127, 128, 131,				
	01	132, 134, 138, 140, 142, 143, 149, 155, 160, 162, 164,				
	01	165, ADD IT 32, 146, 147, 153, QTY CHGS IT 43, 61, 70,				
	01	IT 90(3TO2), IT 58(1TO3), IT 133(5TO2), IT 141(3TO1),				
	01	CHG GRAPHICS	NL12-1849	8-14-12	KMD	AY
	02	IT 10 WAS 4272970, ADD IT 75, MRS 1845	1331872	8-15-16	KMD	JBD

103	427-0936	1	HOSE 1250 12 284.0 OJ OJ
102	421-3887	1	HOSE 1000 16 45.0 OJ OJ
101	417-7380	1	HOSE 1250 12 26.0 OJ OJ
100	411-6472	2	HOSE 2000 8 190.0 OJ 90J
99	-	-	-
98	698-9418	1	HOSE 2750 4 34.0 OJ OJ
97	-	-	-
96	-	-	-
95	-	-	-
94	408-9126	1	HOSE 2750 4 70.0 OJ OJ
93	404-0558	1	FTG HYD 0 8 MJ 12 MP JUMP
92	-	-	-
91	400-2424	1	ADAPTER STRAIGHT 1 MJ X 1 MP
90	415-5482	2	HOSE 250 4 10.0 OJ OJ
89	415-3285	1	HOSE 2250 6 334.0 OJ OJ
88	-	-	-
87	409-3109	1	HOSE 2250 6 222.0 OJ OJ
86	425-6308	1	FTG HYD 0 4 MP 12 MP
85	425-6310	1	FTG HYD 0 8 MP 12 MP
84	415-1426	1	HOSE 1000 16 31.0 OJ OJ
83	401-3788	1	PIPE RED .500 250 BSH 6000
82	-	-	-
81	426-1746	1	HOSE 1200 12 120.0 OJ OJ SS
80	-	-	-
79	425-8491	1	EXHAUST COVER
78	027-2969	2	PIPE PLG .250 CS HX
77	-	-	-
76	-	-	-
75	427-5726	REF	ASSY TRANSDUCER REAR FRAME
74	421-3975	1	HOSE 250 4 200.0 OJ OJ
73	071-1253	1	CLAMP HOSE WORM DR .81 1.75
72	424-4689	2	FTG HYD 90 12 MJ 12 FJ MOD
71	427-0933	1	HOSE 2000 8 286.0 OJ 90J
70	421-3508	1	HOSE 2000 8 136.0 OJ 90J
69	427-0932	1	HOSE 2750 4 306.0 OJ 90J
68	-	-	-
67	-	-	-
66	403-4924	2	HOSE 2750 4 80.0 OJ OJ
65	-	-	-
64	408-1386	12	FTG HYD 90 12 MJ 10 MO
63	403-4937	1	HOSE 2750 4 20.0 OJ OJ
62	-	-	-
61	419-3350	1	BUSHING, REDUCING, 1 X 3/4
60	427-0931	1	HOSE 2750 4 400.0 OJ OJ
59	021-3417	1	PIPE ELB 1.000 90
58	400-2422	3	FTG HYD 0 12 MJ 12 MP
57	-	-	-
56	424-3961	3	HOSE 2750 4 152.0 OJ OJ
55	-	-	-
54	427-0930	1	HOSE 2250 6 406.0 OJ OJ
53	008-8402	4	PLUG 3/8 NPT
52	-	-	-
51	-	-	-
50	-	-	-
49	-	-	-
48	924-2071	1	HOSE 2250 6 28.0 OJ OJ
47	405-1616	2	STRADPT 3/8MJX3/8MJ BULKHEAD
46	-	-	-
45	-	-	-
44	427-1109	1	AIR BOX
43	400-2478	7	FTG HYD 90 6 MJ 6 FJ SWVL
42	-	-	-
41	-	-	-
40	-	-	-
39	406-9124	2	HOSE 2250 6 14.0 OJ OJ
38	427-3465	1	ASSY RELAY VALVE L18/2350 FXL
37	052-7116	1	ADAPTER STRAIGHT 3/8 MJ X 1/4 MP
36	427-3473	1	ASSY RELAY VALVE L18/2350 RXL
35	403-2316	1	TEE 12
34	400-2441	5	FTG HYD 90 12 MJ 12 MP
33	-	-	-
32	427-7971	1	ASSY AIR SOLENOID REAR
31	427-3420	1	ASSY AIR TANK STAND
30	-	-	-
29	-	-	-
28	425-8493	1	EXHAUST HOSE
27	403-2077	1	HOSE 2750 4 168.0 OJ OJ
26	-	-	-
25	-	-	-
24	-	-	-
23	-	-	-
22	427-0891	1	KIT AIR HORN
21	424-8784	REF	DISC - 22 OD X 1 LARGE BRAKE
20	423-4511	REF	HUB BRAKE B40
19	424-0108	REF	CARRIER AND LINING ASSEMBLY
18	401-2924	REF	WELD COUPLING 3/4 NPT
17	424-0101	REF	TORQUE TUBE RIGHT MACHINED
16	424-0102	REF	BRAKE ACTUATOR MOUNT
15	424-8969	REF	BRAKE SPRING CYLINDER
14	424-0105	REF	MOUNT CALIPER
13	424-0103	REF	TORQUE TUBE LEFT MACHINED
12	-	-	-
11	-	-	-
10	427-7970	1	ASSY AIR SOLENOID FRONT
9	418-6237	1	HOSE 2750 4 160.0 OJ OJ
8	-	-	-
7	407-8315	3	HOSE 1250 12 30.0 OJ OJ
6	427-4390	1	ASSY DUAL BRAKE VALVE
5	402-1412	1	FTG HYD 0 10 MO 12 MJ
4	425-8482	REF	DESICCANT CARTRIDGE (SERVICE PART)
3	426-4801	1	DRYER AIR
2	426-1543	1	COMPRESSOR
1	427-7972	1	ASSY AIR RESERVOIR FRONT

148	424-3502	2	HOSE 1250 12 25.0 OJ 90J
147	424-3530	2	HOSE 1250 12 22.0 OJ 90J
146	422-6500	1	HOSE 1250 12 25.0 OJ OJ
145	411-7472	1	CLAMP BRACKET
144	401-1756	4	FTG HYD 0 6 MJ 6 MP JUMP
143	-	-	-
142	-	-	-
141	400-2483	1	FTG HYD 90 16 MJ 16 FJ SWV
140	-	-	-
139	-	-	-
138	-	-	-
137	-	-	-
136	-	-	-
135	-	-	-
134	-	-	-
133	401-1748	2	FTG HYD 90 4 MJ 4 MP JUMP
132	-	-	-
131	-	-	-
130	427-7968	1	ASSY AIR RESERVOIR BLEED FRONT
129	427-7969	1	ASSY AIR RESERVOIR BLEED REAR
128	-	-	-
127	-	-	-
126	-	-	-
125	415-5483	1	HOSE 250 4 12.0 OJ OJ
124	-	-	-
123	-	-	-
122	-	-	-
121	-	-	-
120	-	-	-
119	-	-	-
118	-	-	-
117	-	-	-
116	-	-	-
115	-	-	-
114	-	-	-
113	-	-	-
112	427-0935	2	HOSE 1250 12 152.0 OJ OJ
111	-	-	-
110	-	-	-
109	-	-	-
108	416-3756	2	HOSE 1250 12 182.0 OJ OJ
107	427-0934	1	HOSE 2250 6 292.0 OJ OJ
106	-	-	-
105	-	-	-
104	422-3265	1	HOSE 1250 12 140.0 OJ 90J

ITEM	PART NO	QTY	DESCRIPTION	ITEM	PART NO	QTY	DESCRIPTION
165	-	-	-	104	422-3265	1	HOSE 1250 12 140.0 OJ 90J
164	-	-	-	103	-	-	-
163	408-2855	REF	HOSE 2000 8 278.0 OJ OJ	102	-	-	-
162	-	-	-	101	-	-	-
161	-	-	-	100	-	-	-
160	-	-	-	99	-	-	-
159	-	-	-	98	-	-	-
158	-	-	-	97	-	-	-
157	415-3281	1	HOSE 2250 6 32.0 OJ OJ	96	-	-	-
156	417-2292	2	HOSE 1250 12 28.0 OJ 90J	95	-	-	-
155	-	-	-	94	-	-	-
154	403-2510	1	HOSE 1250 12 21.0 OJ OJ	93	-	-	-
153	411-6607	1	HOSE 1250 12 19.0 OJ OJ	92	-	-	-
152	417-7380	3	HOSE 1250 12 26.0 OJ OJ	91	-	-	-
151	422-2038	3	HOSE 1250 12 30.0 OJ 90J	90	-	-	-
150	407-9178	2	HOSE 1250 12 32.0 OJ OJ	89	-	-	-
149	-	-	-	88	-	-	-

THIS DRAWING AND ALL DATA THEREIN IS THE PROPERTY OF LETOURNEAU, INC. IT IS CONFIDENTIAL AND MUST NOT BE COPIED, REPRODUCED, OR TRANSMITTED IN ANY FORM OR BY ANY MEANS, ELECTRONIC OR MECHANICAL, INCLUDING PHOTOCOPYING, RECORDING, OR BY ANY INFORMATION STORAGE AND RETRIEVAL SYSTEM. WITHOUT THE WRITTEN PERMISSION OF LETOURNEAU, INC. THIS DRAWING IS TO BE USED IN ANY WAY INTERFERING WITH THE INTERESTS OF LETOURNEAU, INC. SPEC 1650.00.

UNLESS OTHERWISE SPECIFIED:
 DIMENSIONS ARE IN INCHES & DECIMAL FRACTIONS UNLESS OTHERWISE SPECIFIED.
 TOLERANCES ARE:
 ANGLES ±1°
 FRACTIONS ±.015
 XX DECIMAL ±.03
 XXX DECIMAL ±.015

MACHINED CORNERS: R4 X .45
 WELD PROPERTIES SHALL MEET THE MINIMUM REQUIREMENTS OF THE BASE MATERIAL.

THIRD ANGLE PROJECTION

LeTourneau, Inc.
BRAKE CONTROLS L-18502210&UP
LARGE BRAKE

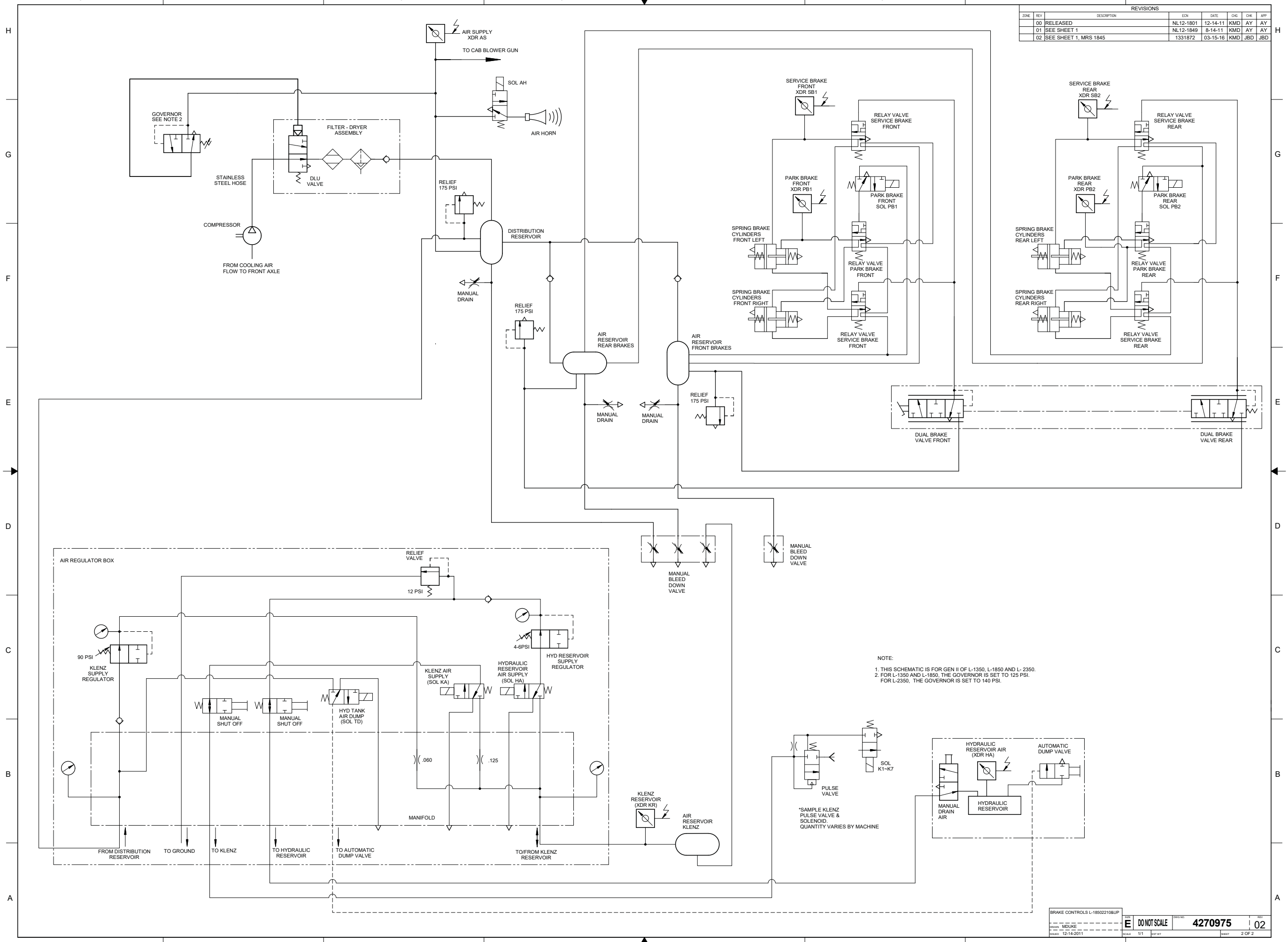
DATE: 12-14-11
 DRAWN BY: M. DUKE
 CHECKED BY: AY
 ENGR BY: AY
 PROJ ENGR BY: AY
 PROJ APPROVAL BY: AY

FIRST USED ON CONTRACT NO: 427-0978/427-0979

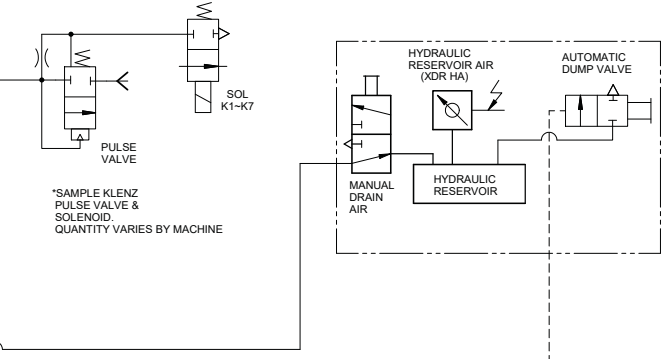
SCALE: 1/1
 SHEET: 1 OF 2

DO NOT SCALE
4270975
 02

REVISIONS						
ZONE	REV	DESCRIPTION	EN	DATE	CHK	APP
	00	RELEASED	NL12-1801	12-14-11	KMD	AY AY
	01	SEE SHEET 1	NL12-1849	8-14-11	KMD	AY AY
	02	SEE SHEET 1, MRS 1845	1331872	03-15-16	KMD	JBD JBD



NOTE:
 1. THIS SCHEMATIC IS FOR GEN II OF L-1350, L-1650 AND L-2350.
 2. FOR L-1350 AND L-1650, THE GOVERNOR IS SET TO 125 PSI.
 FOR L-2350, THE GOVERNOR IS SET TO 140 PSI.



Komatsu Mining Corp.

<https://mining.komatsu>



Product designs, specifications and/or data in this document are provided for informational purposes only and are not warranties of any kind. Product designs and/or specifications may be changed at any time without notice. The only warranties that apply to sales of products and services are standard written warranties, which will be furnished upon request.

Trademarks and service marks used herein are the property of Komatsu Ltd., Komatsu Mining Corp., or their respective owners or licensees.

© 2019 Komatsu Mining Corp. All rights reserved.